

HOTTOP™

ELECTRIFIABLE HORSE RAIL

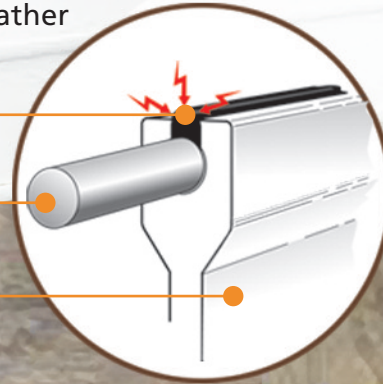


Hottop™ is an electrifiable option to our popular **Horserail™** product. It uses an electric fence energizer as a training aid to help safely train your horses and preserve your investment by stopping such occurrences as "reach-through and cribbing." **Hottop™** is available in a 4.25" width (2 & 3 wire configurations) in black, brown and white (all with a highly conductive carbon strip.) It features innovative and patented procedures for both attaching and joining the rail. The hardware is insulated (when required) and all are "Double Coated" for superior weather resistance (hot dipped galvanized and powder coated.)

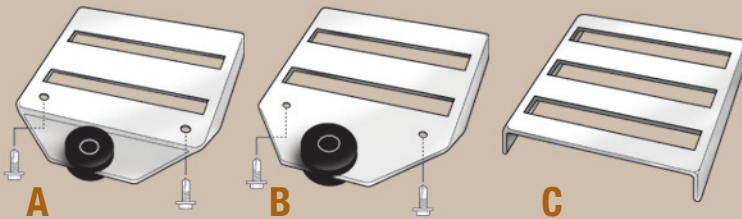
SIZES: 4.25" 2 & 3 WIRE
COLORS: ■ ■ ■



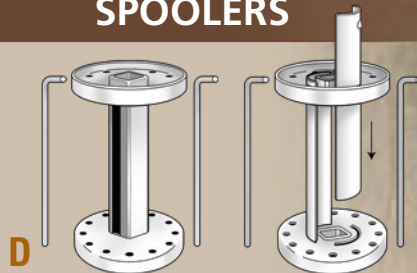
- *Highly Conductive Carbon Compound*
- *Molecularly Bonded High Tensile Wire*
- *Non-Conductive Medium Density Polyethylene*



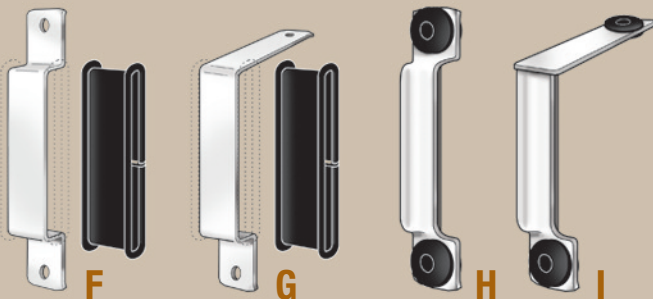
INSULATED & JOINING BUCKLES



SPOOLERS



INSULATED BRACKETS



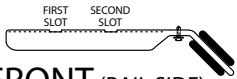
- A.** 45° Pre-Bent End Post Attaching Buckle
- B.** Straight End Post Attaching Buckle
- C.** Joining Buckle
- D.** Tensioning Spooler
- E.** 2 Piece Tensioning Spooler
- F.** Flat Bracket
- G.** Top Bracket
- H.** Inside 90 Bracket
- I.** Top Inside 90 Bracket



HOTTOP™ Components & Installation

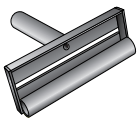
INSULATED BUCKLES

1) BACK (POST SIDE)

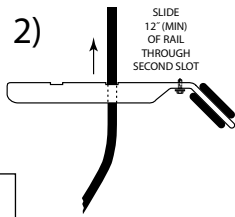


FRONT (RAIL SIDE)

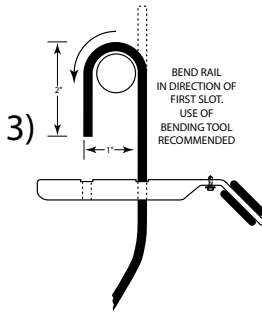
BENDING TOOL



2)

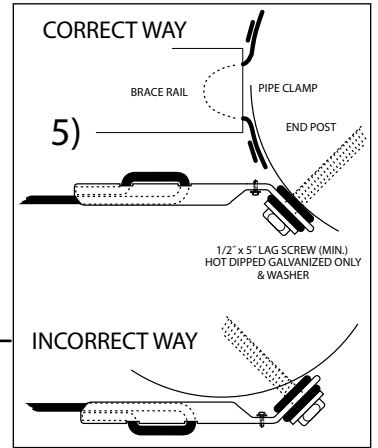
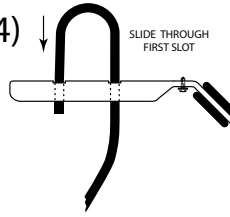


3)

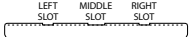


INSULATED 45° PRE-BENT BUCKLE

4)

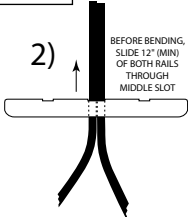


1) BACK (POST SIDE)

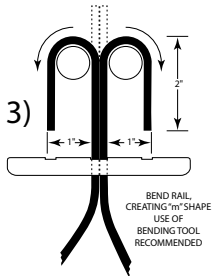


FRONT (RAIL SIDE)

2)

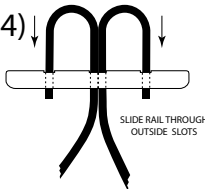


3)

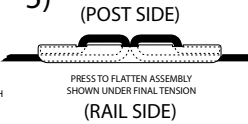


JOINING BUCKLE

4)

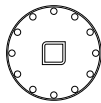


5)

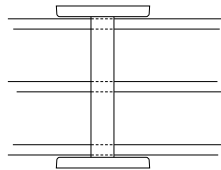
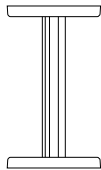


SPOOLERS

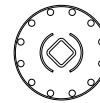
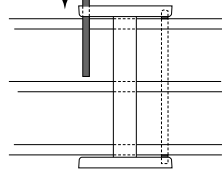
NOTE: Must have sufficient slack in rail for one full rotation before becoming taut.



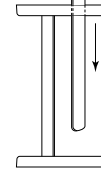
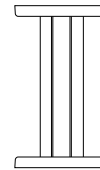
ORIGINAL 1 PIECE SPOOLER
MUST BE SLID ON AND IN PLACE PRIOR TO RAIL ASSEMBLY



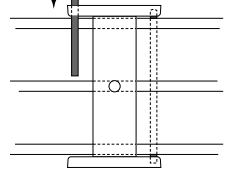
TWO LOCKING PINS **MUST** BE PLACED OPPOSITE EACH OTHER IN HOLES CLOSEST TO THE TENSIONED RAIL



2 PIECE SPOOLER
CAN BE PLACED AFTER RAIL ASSEMBLY

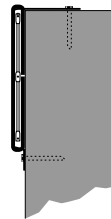
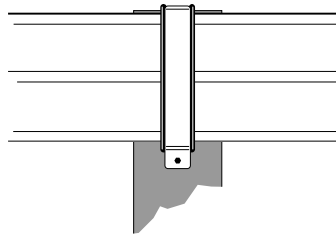


TWO LOCKING PINS **MUST** BE PLACED OPPOSITE EACH OTHER IN HOLES CLOSEST TO THE TENSIONED RAIL

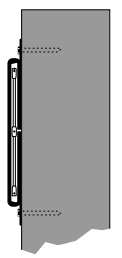
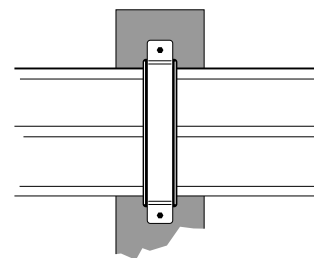


INSULATED BRACKETS

INSULATED TOP BRACKET

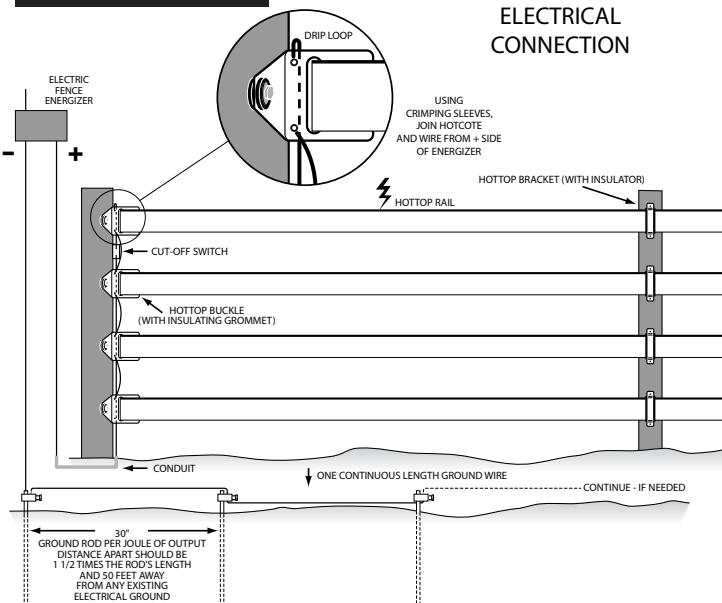


INSULATED FLAT BRACKET



ASSEMBLIES

ELECTRICAL CONNECTION



END POST ASSEMBLY
45° PRE-BENT

